

Installing Maps in Atlas

This is a summary of the steps detailed on the following pages but without screenshots:

- Download Atlas from iTunes or the App store to your iOS device.
- [Download your RouteBuddy Digital Topo Map](#) .iso file using the URL sent to you in your purchase email – Windows users: DONOT let Windows open the downloaded .iso file, just save it to Downloads.
- [Download](#) and install [RouteBuddy for Windows](#) or [RouteBuddy for Mac](#) to your computer.
- [Install your map into RouteBuddy Software for Windows and Mac](#) to **reveal** the place on your computer where the .rbmap folder for the map you have purchased has been installed as follows:
 1. Open RouteBuddy on your computer and choose File / Map Install from the menu bar
 2. Select your downloaded map .iso file from the Computer / Finder window.
 3. Install and Licence your map. You can now view your map on your computer. For more detail on how to use your map in RouteBuddy for Windows or Mac, please refer to the [RouteBuddy Manual](#).
 4. Use File > Reveal Maps to show you where the .rbmap folder is on your computer.
- Proceed with: [Installing Maps in Atlas](#). There are three ways to do this.
 1. If the map is less than 200Mb then use RBSync by letting your iOS device communicate with RouteBuddy via WiFi.
 2. An easy way is to use third party software which easily organises the copy and movement of files between your computer and your iOS devices e.g. iMazing.
 3. Use iTunes to copy the .rbmap file into the Public folder.

Downloading your RouteBuddy Digital Map (with .iso extension)

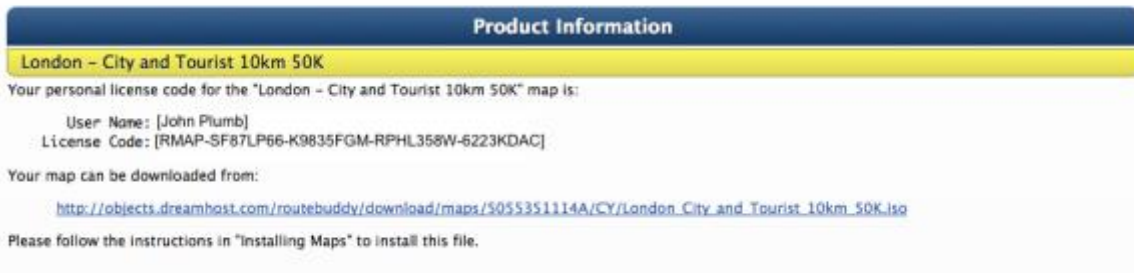
IMPORTANT NOTE: ALL TOPO MAPS PURCHASED FROM THE ROUTEBUDDY STORE HAVE TO BE DOWNLOADED TO YOUR COMPUTER FIRST BEFORE INSTALLATION ON YOUR COMPUTER.

Note: Where there is a / between words below this denotes the different terminology used for Windows / Mac OS X commands.

1. After receiving confirmation of purchase from Worldpay, within an hour you will receive an email containing your map download link (the file name ends in .iso) together with your licence code for the map.

Thank you for purchasing from RouteBuddy Ltd.

Please keep this email for future reference, as it includes a summary of your order including your license information.



2. Click on the map URL in the email to download the .iso file.

IMPORTANT NOTE FOR WINDOWS USERS:

Do not allow Windows to open the downloaded .iso file or try to burn to disk, just save the file to your Downloads Folder or Desktop.

3. **Copy the complete contents of your email** to the clipboard by using the following keyboard commands (This will help with the licensing process detailed below).

Ctrl+A / Cmd+A to highlight the whole email.

Ctrl+C / Cmd+C to copy the whole email to clipboard.

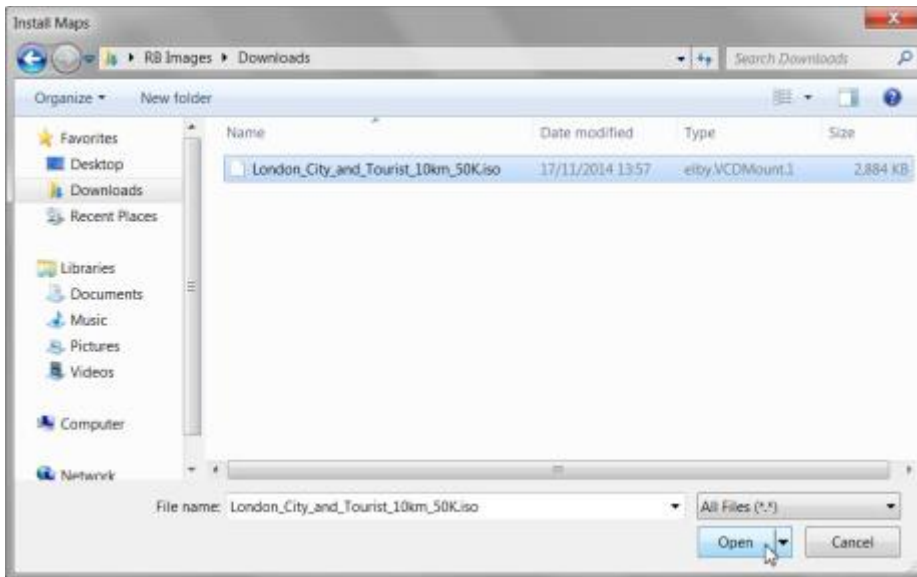
Installing maps into RouteBuddy Software for Windows or Mac

Download the free Demo of RouteBuddy Software for [Windows](#) or [Mac](#).

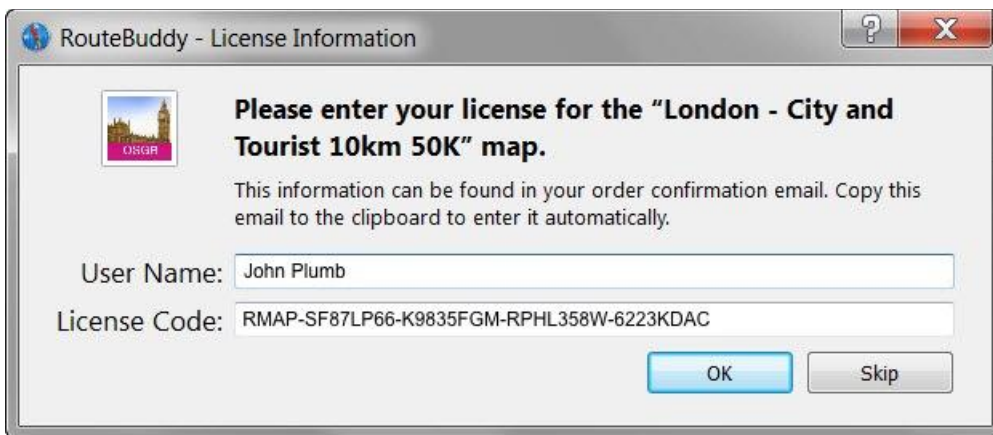
1. Double-click the downloaded .exe (Windows)/.dmg (Mac) file depending on your Operating System and follow the instructions to install.
2. Once the installation process has finished, keep the RouteBuddy software open and from the RouteBuddy menu choose:
File>Install Maps



3. RouteBuddy will open a Computer / Finder window for you to find the .iso file you have downloaded. By default, on most computers, this will be in your Downloads folder.



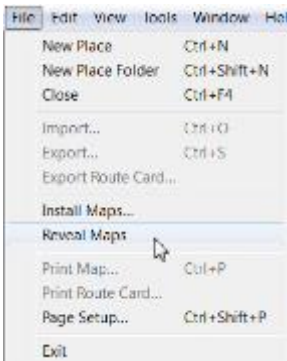
4. Click on the downloaded .iso file to highlight and click on **"Open"**.
 5. Follow the instructions on screen. For smaller files the installation will take seconds. A drop down licence box will appear and, if you've copied your email to the clipboard*, this will be pre-filled by RouteBuddy. Click on **OK**.
- *If you haven't copied the contents of the email to your clipboard then refer back to the instructions above on how to do this.



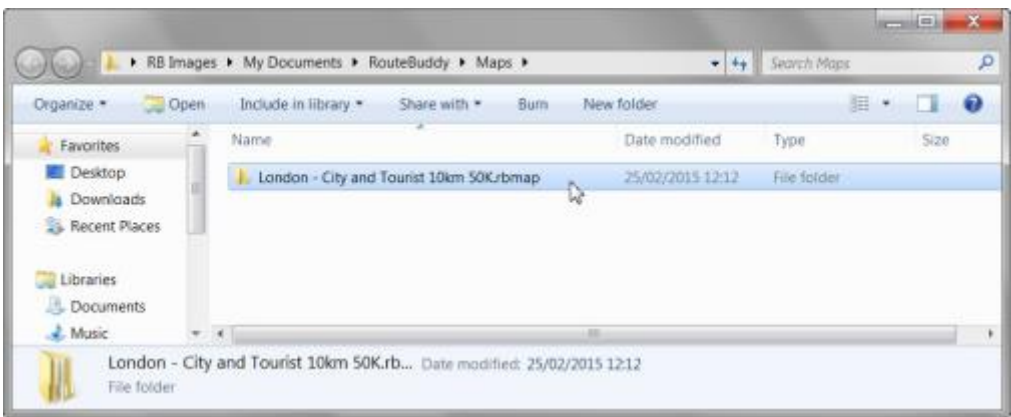
The map is now installed in RouteBuddy for Windows and Mac OS X and ready for use on your computer. Please refer to the [RouteBuddy Manual](#) for instructions on how to use the Map on your computer.

Installing the map on your iOS device.

1. Download [RouteBuddyAtlas](#) to your iOS device if you haven't done so already.
2. Complete the process above for [installing the map into RouteBuddy on your computer](#).
3. Open RouteBuddy on your computer and click on **File > Reveal Maps**.



4. A Computer / Finder window will open showing where your .rbmap file is stored on your computer. The .rbmap folder has been extracted by RouteBuddy from the .iso file.



5. Minimise the RouteBuddy window and **leave this Computer (Windows) / Finder (Mac) window open** on your Desktop.
6. You are now ready to copy the .rbmap folder to your iOS Device.

Choose 1 of the three following options to get the map from your computer to your iOS device:

1. Transfer using [RBSync](#) – this is the easiest option but we only recommend it for maps of 200Mb or less (check the size of your map file in the Computer (Windows) / Finder (Mac) window).
2. Transfer using [iMazing](#) – great software for managing your iOS devices and you can transfer a number of items using the free trial. See their [faqs](#).
3. Transfer using [iTunes](#) – It is good to get used to using iTunes for transfer of files and backup of your maps.

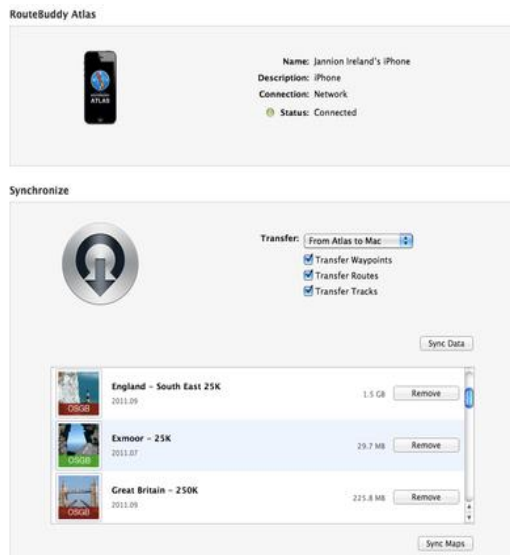
RBSync

Connect your iOS device to RouteBuddy using your WiFi router

If you already have your iOS device set up to use iOS Sync and are able to use your network router to sync iTunes to your device then Atlas and RouteBuddy will automatically use this facility too. Check this out by opening RouteBuddy on your computer and then open Atlas on your iOS device. Your iOS device should appear in the sidebar of RouteBuddy.

RouteBuddy iOS device Synchronise window

1. In the iOS device Synchronise window in RouteBuddy there is a section listing all the maps which are installed in Atlas and/or RouteBuddy.



2. The meaning of the clickable buttons on the r.h.s. of the Synchronise part of the window (see above example) are as follows:
 - "Install" - The map is in RouteBuddy, but not in Atlas, so it is available for installation into Atlas. To change it's state ready to sync then click on it and it will change to "Will Install".
 - "Will Install" - The map is in RouteBuddy, but not in Atlas, you have clicked on "Install" and it will be installed into Atlas once you click on Sync Maps
 - "Remove" - The map is in Atlas, and it can be removed but it will be backed up to RouteBuddy before removal. If you click on "remove" it will change the state of the map to "Will Remove" and the map will be removed from Atlas once you click on Sync Maps
 - "Will Remove" The map is in Atlas, and it will be removed once you click on Sync Maps
 - "Remove" + "Sync Maps" will just copy the maps from Atlas to RouteBuddy
 - "Will Remove" + "Sync Maps" will copy the maps to RouteBuddy and, at the same time, remove them from your iOS device.
 - Try clicking some buttons then you can see them toggle back and forth between the above options - nothing actually gets sent until you press the Sync Maps button.

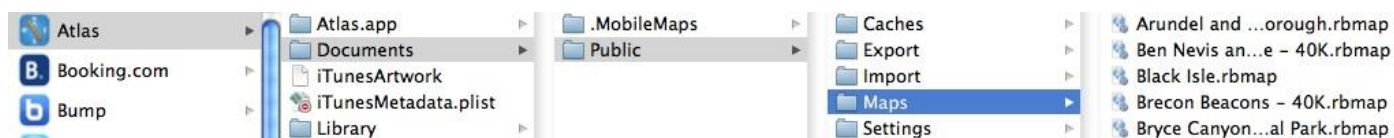
IMPORTANT: Once you have completed the syncing process remember to **eject the iOS device** from the RouteBuddy Desktop software. Failure to do so sometimes places the RouteBuddy software into a 'hung' state and the only option is to force quit.

3. Open RouteBuddyAtlas on your iOS device and the map will now be in the Maps list.
If the map doesn't appear in the Atlas Maps list then click on settings in the app and then go back to the Maps screen and the map should then appear.
4. Go to: [Licensing your map](#).

Installing Maps using third party software such as iMazing

A simple way to copy folders or files from your computer to your device is to use programs such as [iMazing\(Diskaid\)](#) or [iExplorer](#). These iOS device file transfer programs are very useful as they can access the files in Atlas and other iOS.

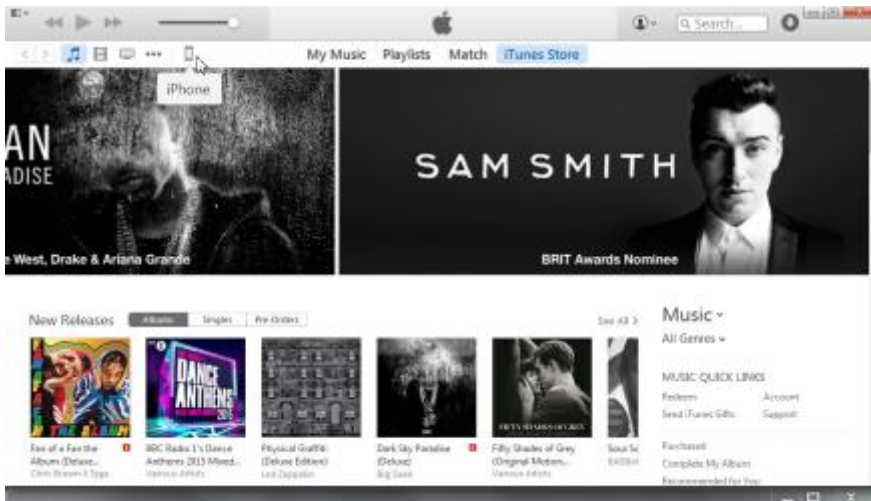
1. Install [iMazing\(Diskaid\)](#) or [iExplorer](#) on your computer.
2. Open RouteBuddy for Mac OS X or Windows on your computer and click on "File" on the menu bar at the top, then "Reveal Maps" to show the .rbmap saved on your computer.
3. Connect your iOS device to your computer.
4. Open up iMazing(Diskaid) or iExplorer
5. In iMazing(Diskaid) the Maps folder can be found in: Apps > Atlas > Documents > Public > Maps
6. In iExplorer the Maps folder can be found in: Apps > com.routebuddy.Atlas > Atlas > Documents > Public > Maps



7. Drag the .rbmap folder (for example, in the example above - Black Isle.rbmap) that you can see when you use File > Reveal Maps in RouteBuddy from the Reveal Window, into the Maps folder in Atlas shown in iMazing(Diskaid) or iExplorer. The map data will then be copied and, once the copy has completed, you can disconnect your device and proceed with [licensing](#) of map in Atlas.
8. Open RouteBuddy Atlas on your iOS device and the map will now be in the Maps list.
9. If the map doesn't appear in the Atlas Maps list then click on settings in the app and then go back to the Maps screen and the map should then appear.
10. Go to: [Licensing your map](#).

Map transfer using iTunes

1. Open iTunes on your computer and connect your iOS device, click on the device on the top icon bar of iTunes.



2. Click on **Apps**.

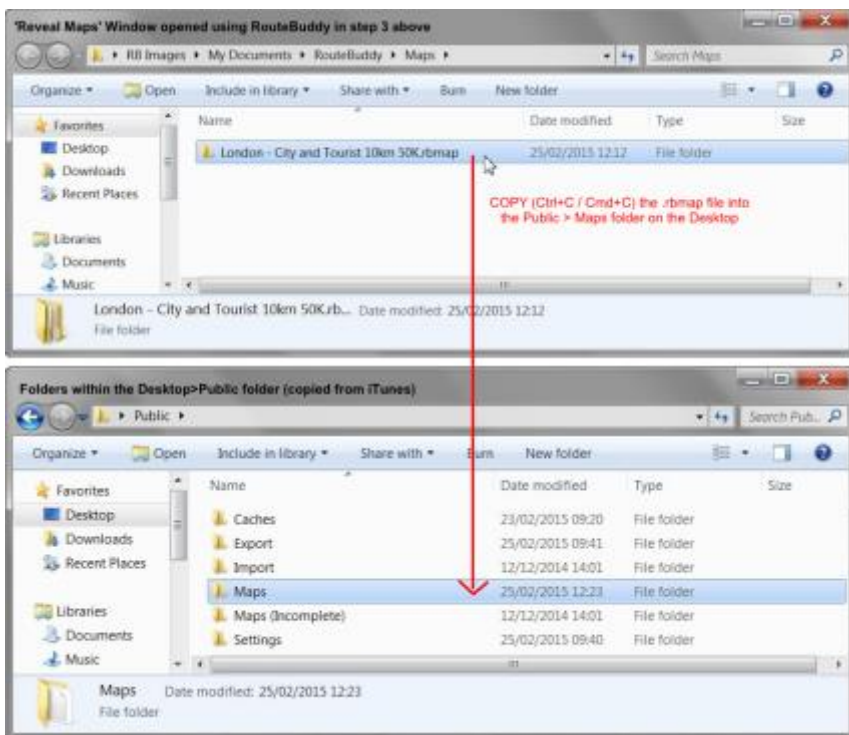


3. Use the main scroll bar on the r.h.s. of the window to scroll to File Sharing, you will see all the Apps that allow File Sharing. Click on the Atlas app in iTunes and the Public folder will be shown (make a note of the size of this folder – it will show an increase in size once you have copied your new map into it).

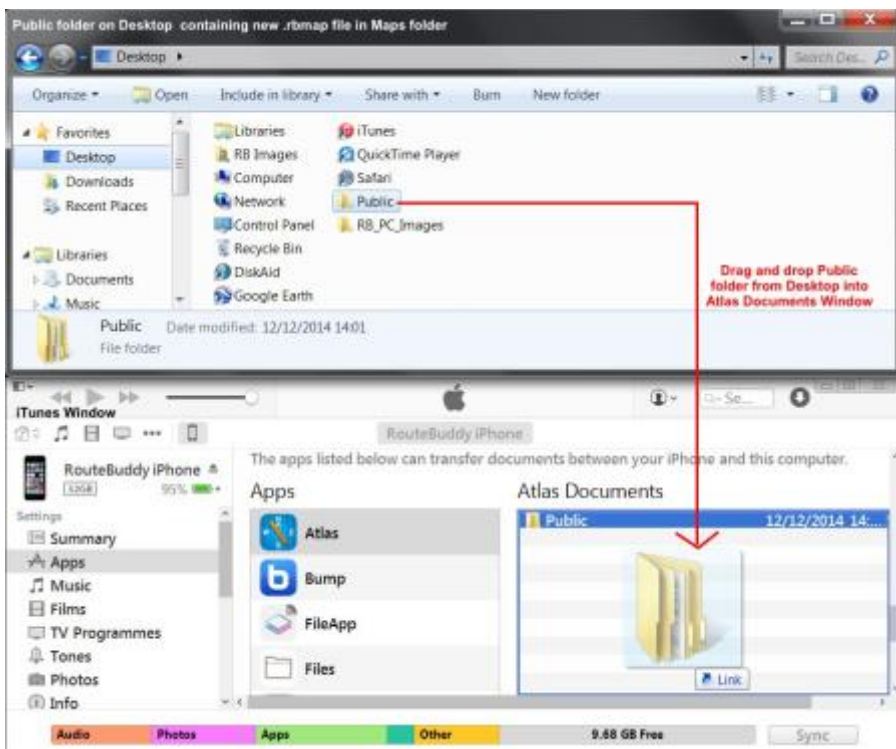


4. **Save the Public folder** from iTunes to your **Computer Desktop**.
5. On your computer Desktop Go to the Computer / Finder Window opened by **RouteBuddy** using **File > Reveal Maps** in Step 3 above.
6. Ctrl+N / Cmd+N to open a new Computer / Finder window.

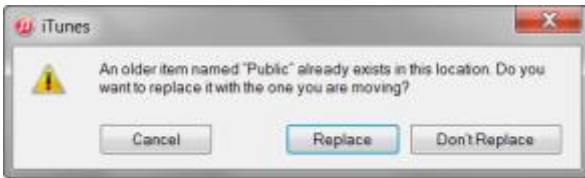
7. In the new window, go to the Desktop folder, find the **Public folder** (saved from iTunes to your Desktop in step 7) and double-click on it to reveal the files within, one of which will be the **Maps** folder.
8. **Copy** (Ctrl+C / Cmd+C) the **.rbmap file** from the folder revealed by RouteBuddy in step 10 to the **Public > Maps** folder which was saved to your Desktop from iTunes in step 8 and wait for the copy to finish.



9. When the copy has finished, Drag and Drop the Public folder from the Desktop into the Atlas Documents window in iTunes.



10. iTunes will ask you if you want to Replace the folder, click on **Replace**.



11. The Public folder will now be replaced with the new folder containing your new map (the size of the folder should have increased!).



12. Eject your iOS device from iTunes and close iTunes.
13. Open RouteBuddyAtlas on your iOS device and the map will now be in the Maps list.
If the map doesn't appear in the Atlas Maps list then click on settings in the app and then go back to the Maps screen and the map should then appear.



14. Go to: [Licensing your map.](#)

Licensing your map

1. Go to Maps in Atlas on your iPhone/iPod touch and your installed map should appear under Offline Maps.
2. If the map doesn't appear in the Atlas Maps list then click on settings in the app and then go back to the Maps screen and the map should then appear.
3. Touch the map icon or name, and the licence code window will open up.
4. If you can access your licence email on your phone you may like to use the copy and paste functions on the phone to enter the licence.
5. If you enter manually then type exactly as shown in your licence email without the enclosing brackets.
6. When you have entered the licence correctly the "Done" button at the top will be highlighted in blue.
7. Tap the "Done" button and your map will be licenced and ready to use.

Important! Backup your downloaded software files and .iso files and licence codes.

It is important that you back-up your downloaded software and map files. We only guarantee to store the files on our server for a maximum of one-year. If, after that period of time, you need us to send you your maps and/or software because you have lost them there will be a charge for recovering the files from archive plus administration and any production of media (disk or USB), postage and packing costs if required.

We suggest you copy your email containing download links and licence codes to a text document and store this somewhere safely on your computer and on your back-ups. We will only recover these for you if you have paid the Licence look-up fee upon purchase.

Other benefits of installation of the maps on your computer before installing in Atlas for iOS are:

- Use your maps on your computer too! - Your topo maps can also be used in RouteBuddy for Windows or Mac OS X and, once you start using the desktop application, you will see the extra benefits.
- Safe storage of Maps - Downloading of your maps to your computer (plus your computer backup) means that if your iOS device has problems, is lost, stolen or broken then you never lose your maps.